

THIS INSTRUMENT PREPARED BY
DAVID P. LINDLEY
OF
CAULFIELD and WHEELER, INC.
SURVEYORS - ENGINEERS - PLANNERS
7900 GLADES ROAD, SUITE 100
BOCA RATON, FLORIDA 33434 - (561)392-1991
JULY - 2014

STATE OF FLORIDA
COUNTY OF PALM BEACH
THIS PLAT WAS FILED FOR
RECORD AT _____ M.
THIS _____ DAY OF _____
A.D. 20____ AND DULY RECORDED
IN PLAT BOOK _____ ON
PAGES _____ AND _____
SHARON R. BOCK
CLERK AND COMPTROLLER

BY: _____
DEPUTY CLERK

SHEET 11 OF 18

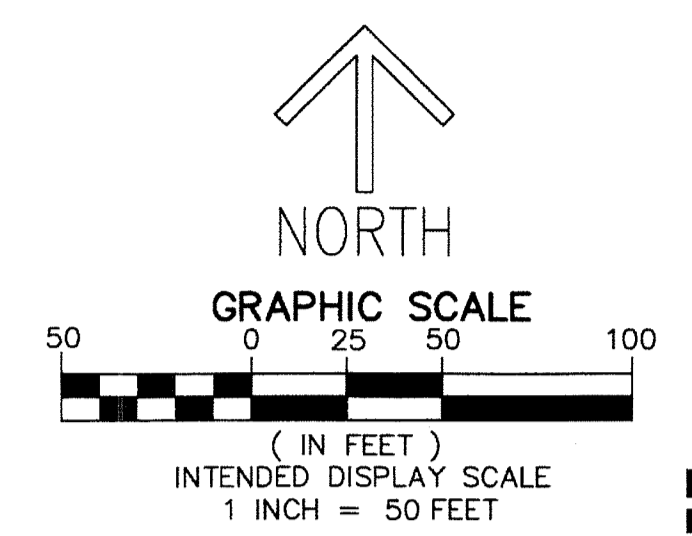
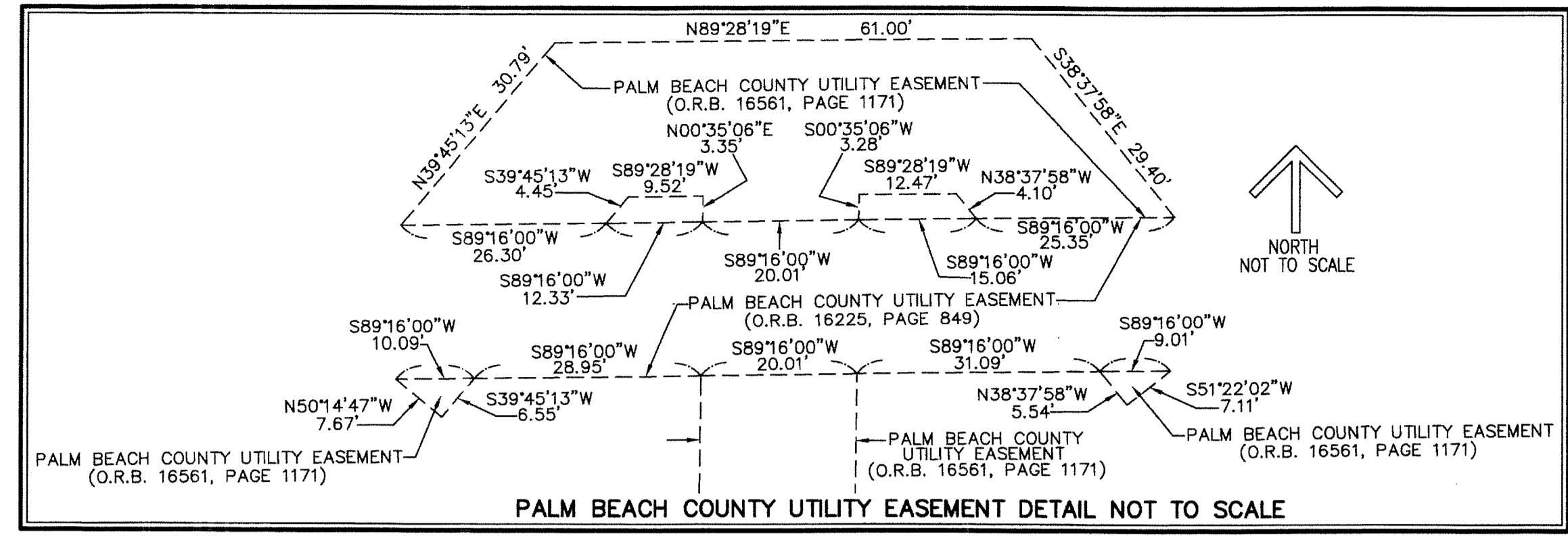
BEING A REPLAT OF PARCEL A, PARCELS B, TRACTS A, B, C, D, L-1, L-2 AND L-3,
PALM BEACH THOROUGHbred TRAINING FARM, ACCORDING TO THE PLAT THEREOF,
AS RECORDED IN PLAT BOOK 96, PAGES 164 THROUGH 171, OF THE PUBLIC RECORDS OF PALM BEACH COUNTY, FLORIDA,
LYING IN SECTIONS 17, 18, 19 AND 20, TOWNSHIP 45 SOUTH, RANGE 42 EAST, PALM BEACH COUNTY, FLORIDA.

PALM MEADOWS ESTATES

SHEET 15	SHEET 16	SHEET 17	SHEET 18
SHEET 11	SHEET 12	SHEET 13	SHEET 14
SHEET 8	SHEET 9	SHEET 10	SHEET 11
SHEET 5	SHEET 6	SHEET 7	SHEET 8

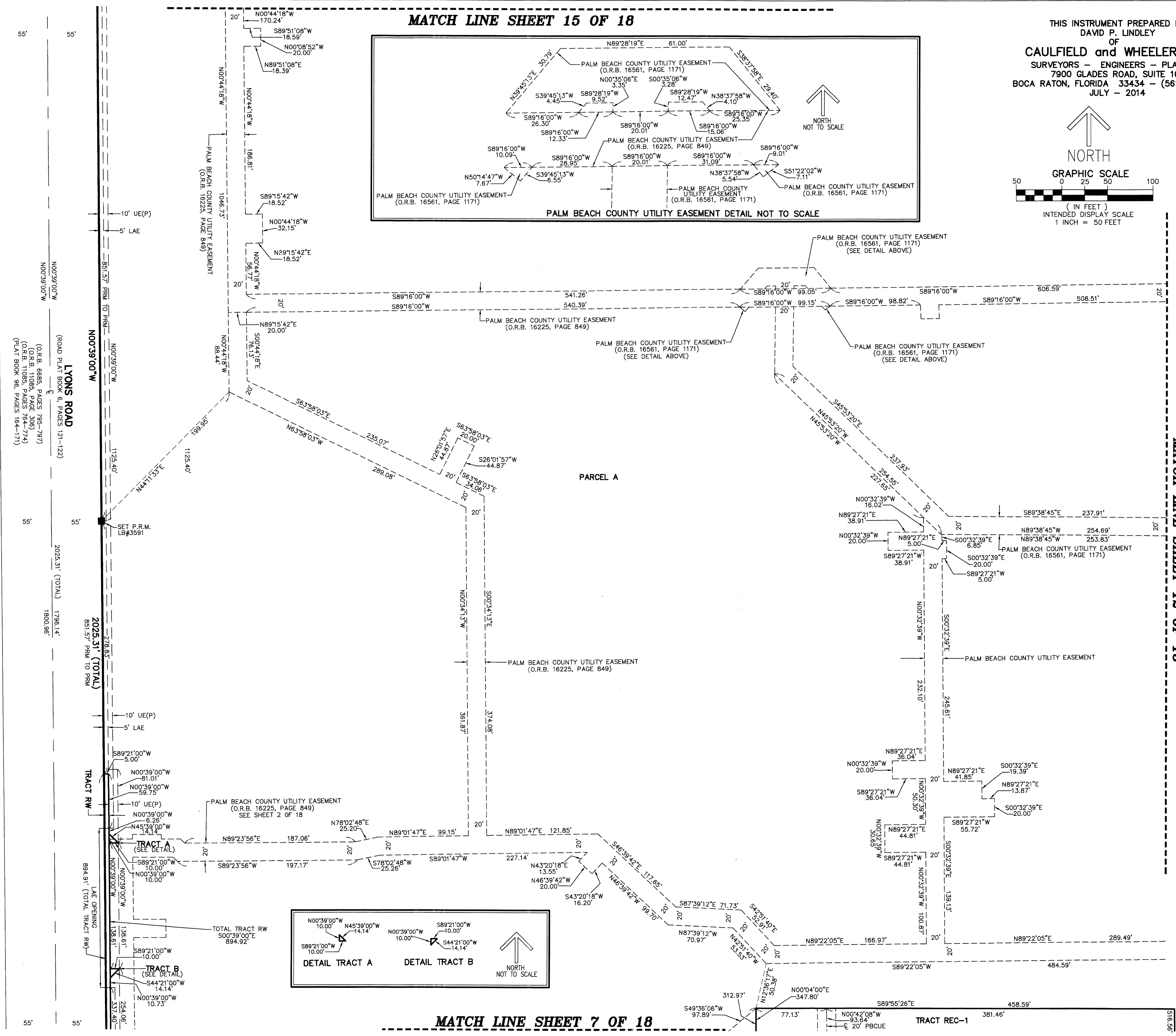
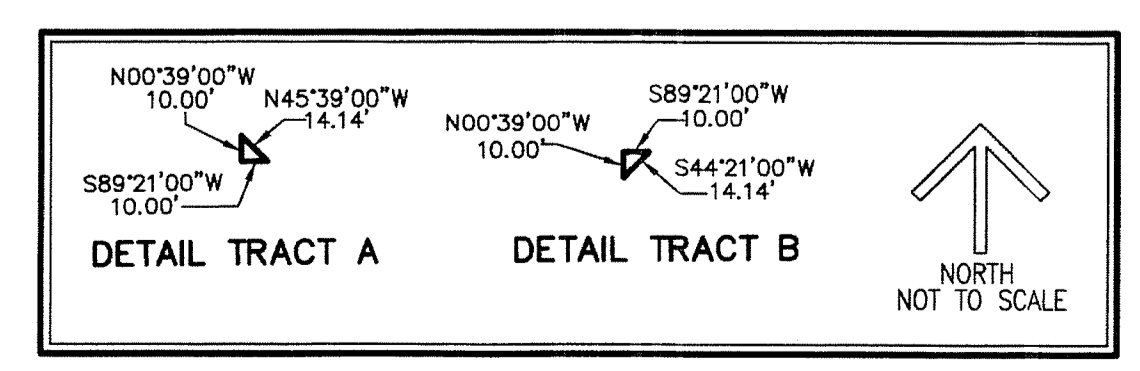
↑ NORTH
SHEET INDEX
NOT TO SCALE

MATCH LINE SHEET 15 OF 18



MATCH LINE SHEET 12 OF 18

MATCH LINE SHEET 7 OF 18



EQUUS AGR-PUD PHASE ONE
(PLAT BOOK 97, PAGES 11-24)

LYONS ROAD
(ROAD PLAT BOOK 6, PAGES 121-122)
(O.R.B. 6885, PAGES 708-737)
(O.R.B. 6885, PAGES 738-765)
(O.R.B. 11085, PAGES 764-774)
(PLAT BOOK 96, PAGES 164-171)

TRACT A
(SEE DETAIL)
TOTAL TRACT RW
S00°39'00\"/>

TRACT B
(SEE DETAIL)
TOTAL TRACT RW
S00°39'00\"/>